

Police Athletic League Wilmington



AUGUST 2023

PREPARING FOR THE SCHOOL/COLLEGE YEAR

National Back To School Month



BACK TO THE BOOKS!

3707 North Market Street

Wilmington, DE 19802

Open Monday-Friday 7am-8pm

www.palw.org



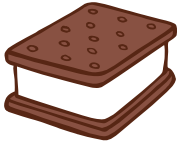
@PalWilmington

PLAN YOUR WORK AND WORK YOUR PLAN



YOUTH ** COMMUNITY ** RESOURCE

Fun Dates To Remember:



August 2 - National Ice Cream Sandwich Day



August 4 - National Chocolate Chip Cookie Day

I ♥ BOOKS

August 9 - National Book Lover's Day



August 11 - National HIP HOP Day

August 15 - National Back To School Prep Day



August 17 - National Non-Profit Day



August 19 - National Photography Day



August 25 - National Banana Split Day



August 27 - World Rock Paper Scissors Day



August 29 - National Sports Day

TAKE NOTES!



PALW EVENTS/WEEKLY ACTIVITIES CALENDAR

AUGUST 2023

SUNDAY	MONDAY	TUESDAY	WEDNESDAY	THURSDAY	FRIDAY	SATURDAY	
		1	ZUMBA CAMP FRESH SWAT	2	3	4 DRUMMING	5 LEARN 2 RIDE
6 LEARN 2 RIDE	7 CAMP FRESH OMEGA	8	ZUMBA SWAT CAMP FRESH	9	10	11 DRUMMING	12 LEARN 2 RIDE
13 LEARN 2 RIDE	14 CAMP FRESH	15	ZUMBA SWAT CAMP FRESH	16	17	18 DRUMMING	19 LEARN 2 RIDE
20 LEARN 2 RIDE	21 CAMP FRESH OMEGA	22	ZUMBA SWAT CAMP FRESH	23	24	25 DRUMMING	26 LEARN 2 RIDE
27 LEARN 2 RIDE	28 CAMP FRESH	29	ZUMBA SWAT CAMP FRESH	30	31		

[View our PALW Event Calendar online: Click Here](#)

The PALW is POPPING!!!

Omega Village Mentoring (6:30pm-8pm)
Boys program Bi-Weekly
DSAMH Prevention - (3:30pm- 5pm Bi-weekly)
NPAL Mentoring (4:30pm - 5:30pm)
Zumba (5:30pm-7pm)
Life Savers - Daily (3pm-8pm)
Learn2Ride (8:00am - 12pm) Sat & Sun

African Drumming(4pm-5pm)
S.W.A.T (4:30pm- 5:30pm)
Students Working Against Tobacco
WYLIP 5 pm - 6 pm
MWUL Achievement Matters New Program
- Thursdays
CAMP FRESH - MONDAY AND WEDNESDAYS



MAKE AN APPT TO GET EYE EXAMS AND PHYSICALS FOR THE FAMILY



"BUILDING BRIGHTER FUTURES"

COOL COMMUNITY



WE PARTNER WITH THE WILMINGTON POLICE DEPARTMENT AND OUR COMMUNITY AT LARGE TO PROVIDE OUR COMMUNITY AND YOUTH WITH VALUABLE RESOURCES AND OPPORTUNITIES

INCLUDING:

- **ATHLETIC PROGRAMS**
- **HOLISTIC WELLNESS**
- **MENTORSHIPS**
- **SOCIAL DEVELOPMENT ACTIVITIES and more**



www.palw.org



Need a safe place for your child to learn and grow?
 Our Early Learning Center and Before and After School
 programs are now enrolling!





Police Athletic League of Wilmington

Early Learning Center

Outdoor Play Space



Full Services for all Ages

Before & Aftercare
Ages 5 - 13 years

Transportation



Summer Camp
Ages 5 - 13 years

Family Setting
 Nurturing Hot Meals Daily
 Breakfast, Lunch & Snack
 Daily Curriculum
 Energetic & Nurturing Certified Staff
 Electronic Parent Portal

ENROLLING NOW!!!



Daily Reports
Potty Training
Free Formula
Safe Environment

Indoor & Outdoor Play Space
Full Gymnasium



Indoor Activities

Toddler Center



1 year old Room
2 year old Room
3 year old Room
4 year old Room
5 year old Room

Baby Rooms:
 6 weeks to 1 years old



More Information:
Roxanne.Coleman@palw.org
 302.764.6170

www.palw.org

Buy In Bulk

Certain back to school items are also needed around the house and will always be needed for back to school seasons in the future.



LIFE

SAVERS



*Our Life Savers Program is open to youth, Monday - Friday 3 pm - 8pm
Life Savers provides assistance with homework while offering; prevention programs, mentorship, cultural enrichments and field trips*



Life Savers Weekly Schedule:

Homework Assistance: 3:15pm - 4:15 pm

Chat and Chew 4:20 pm - 5:15 pm

Recreation 5:20 pm - 7:30 pm

Clean Up 7:35 pm - 7:55 pm

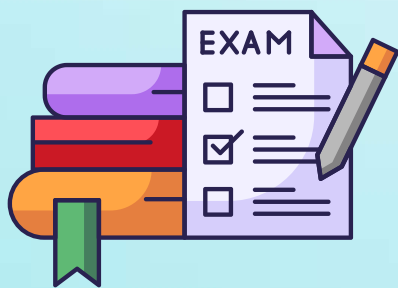
Chat and Chew Topics:

- Teen Suicide Prevention
- Mental Health Education and Stigma Education
- Substance Abuse Prevention and Education
- Vaping Prevention and Education
- Anti-Bullying
- Cyber Safety
- Sexual Exploitation/Human Sex Trafficking Prevention

[Sign Up
Here](#)

[Contact Mr. Joel Harris -joel.harris@palw.org](mailto:joel.harris@palw.org)

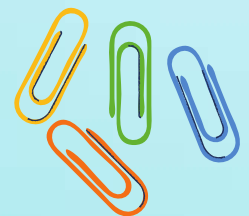
GET INVOLVED - ATTEND MEETINGS



Preparation Tools



- Set Alarm Clock
- Allow time for Breakfast
- Utilize Community Resources
- Start Adjusting Your Child's Sleep Schedule
- Prepare the Night Before/Uniforms/Outfits Etc.



- Get kids the help they need.
- Set Up Homework/Study Station
- Designate a set amount of time for homework.
 - Sign the children up for tutoring
 - 5 new vocabulary/spelling words per day
- Make sure children know their parents/guardians phone numbers
- Make sure school age children know their address
- Communicate with Teachers/Counselors /Directors
- Have fun - Let them Sign up to play a sport -
- PARENTS -SHOW UP TO YOUR CHILD'S GAME!



What's Happening @ PALW!

LEARN TO RIDE



WPD teaches young students how to ride bicycles. The program is from 8 am to 12 pm on Saturday and Sunday Contact: Officer Jordan 302-764-6170 Ryan.Jordan@palw.org



ZUMBA



Mondays & Wednesdays 5:30 - 7 pm

WEEKLY ACTIVITIES



Monday - Dodge Ball

Tuesday - Kick Ball

Wednesday - Flag Football

Thursday - Steal the bacon

Friday - Open Gym

All activities are played from 4pm to 5 pm



SAFE HAVEN

TUESDAY, WEDNESDAY AND THURSDAY 6 - 10 PM

SATURDAYS 2 - 6 PM

BASKETBALL TEAM



PALW basketball team will be participating in the City of Wilmington Basketball League Team ages: 9U, 11U, 13U Sign up Today FREE



COMMUNITY RESOURCES



"BUILDING BRIGHTER FUTURES"

"it takes a village to raise a child"

Enroll Now: www.palw.org

www.PALW.org



UPCOMING EVENTS

SUMMER CAMP TRIPS



- **AUGUST 2 - AIR MOBILITY COMMAND MUSEUM 5-8 YEAR OLDS**
- **AUGUST 4 - AIR MOBILITY COMMAND MUSEUM - 9-13 YEAR OLDS**
- **AUGUST 11 - FUNPLEX**

08/04/2023, 12 PM to 6 PM AmeriHealth Caritas DE will be onsite providing free blood pressure and BMI screenings for adults and youth (5 and up).

- **AUGUST 2 - SPRINGER MIDDLE SCHOOL PARENT ENGAGEMENT 7:30 PALW**
- **AUGUST 10 - PALW OPEN HOUSE 6 - 8 PM**
- **AUGUST 18 - WILMINGTON HOUSING AUTHORITY EMPOWERMENT FAIR**
- **AUGUST 23 - HEALTHY HOOPS - AMERIHEALTH**
- **AUGUST 25 - LIFESAVERS - FUNPLEX**
- **AUGUST 26 - AUTO SHOW**

Coming Soon!

September 5, 2023 Blood Drive 2 - 7 pm PALW Gym

September 9, 2023 11am - 3pm -

PALW BACK TO SCHOOL BASH - GYM

SEPTEMBER 20 PALW GOLF - CLASSIC





• CASH BAR

3M X THE PAL
PRESENTS OUR

2nd **ANNUAL**
CAR SHOW

SAT AUGUST 26TH

• 1PM - 6PM



MUSIC BY

DJ SHAUN KLASSIC

/////////
\$35 REGISTRATION FEE TO ENTER CAR
INTO CAR SHOW / \$5 ENTRY FEE

IF YOU WOULD LIKE TO BE A VENDOR PLEASE CONTACT KENNY AT +13025848756 / KENNETH.HARRIS@PALW.ORG

LOCATION: 3707 N. MARKET ST. 19802 { THE PAL }

TEE TIME!
REGISTER TODAY



11th Annual
PALW GOLF CLASSIC
2023

REGISTER HERE

www.palw.org

REGISTRATION @ 7:30 am

TEE TIME
8:30 AM SHARP

BREAKFAST AND LUNCH WILL BE PROVIDED

@ ED OLIVER GOLF COURSE

SAVE THE DATE

SEPTEMBER 20, 2023

www.palw.org / 302.764.6170

PALW

POLICE ATHLETIC LEAGUE OF WILMINGTON
Building Brighter Futures



Test Environment

Creating the right test environment is crucial for staying focused during your online exam. Find a quiet place where you won't be disturbed and make sure there's adequate lighting. If possible, use noise-cancelling headphones to block out any distractions.



YOUTH COMMUNITY RESOURCE

PALW ***Question*** ***of the Month***



***What good book are you reading
this Summer?***



Event Rental Space Available

Let Us Host
Your Next
Event

*To schedule your next event visit our website: [Click Here](#)
or **Contact: Ms. Jo-Ellen Edwards at (302) 764-6170***

Palw Event-Rentals



**STATE OF THE ART
GYMNASIUM**



**FULL OR HALF
MULTI-PURPOSE ROOMS**

Coming Soon



PALW SPONSORSHIP AND FUNDRAISING OPPORTUNITIES

Private Donors



Corporate Sponsors



We are seeking out Sponsorship and Donors for our

Community Resource and Aquatic Center

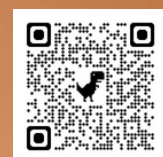


Please contact Christopher.Purnell@palw.org or Kenneth.Harris@palw.org to learn more about sponsorships, donations and fundraising opportunities.



Scan to Donate

[Click Here](#)





POSITIONS CURRENTLY AVAILABLE

Come in We're
HIRING

VAN DRIVER

CDL DRIVER

HEAD TEACHER

ASSISTANT TEACHER

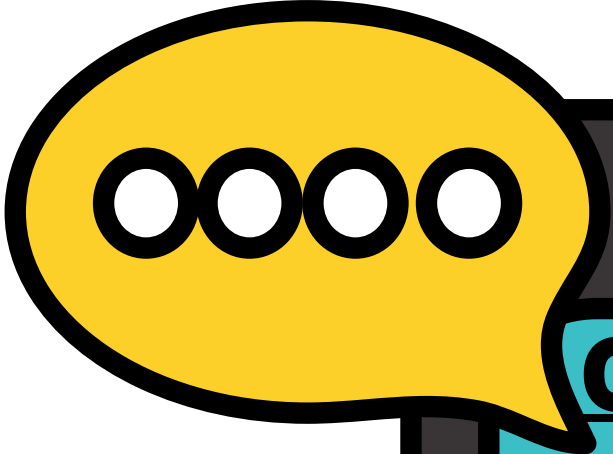
COOK

[email resume to:](mailto:yolanda.williams@palw.org)
yolanda.williams@palw.org

www.palw.org

Contact: Mr. Kenneth Harris, Deputy Director-302-764-6170 or

Email: Kenneth.Harris@palw.org



**CLICK TO
DONATE**



CONTACT US



Call us: 302-764-6170



HOURS OF OPERATION

7 AM - 8 PM

MONDAY - FRIDAY

Visit Us:

**3707 North Market Street
Wilmington, DE 19802**

WWW.PALW.ORG



LIKE AND FOLLOW US:

@PALWILMINGTON

Click Here to Subscribe @Palw